

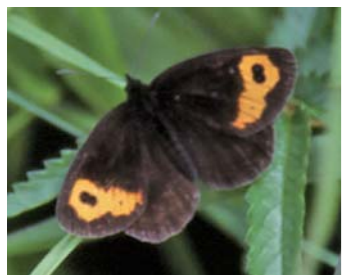
## Wildlife in Uryu Marsh



Siberian hawkfly (laying eggs)



Damselfly



Japanese alpine/Japanese argus habit in Uryunuma



Emerald damselfly



Bumblebee

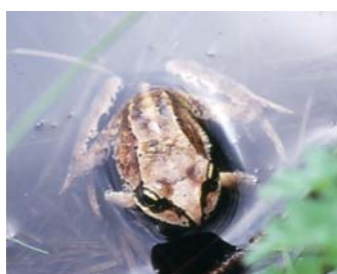


Mallard



### CAUTION! BEAR IN AREA!

Hokkaido is originally a place where many brown bears inhabit. Please check the "Bear Warnings" issued by Uryu Tourist Association or Uryu Town. Please be careful not to encounter a bear by carrying a bear bell and not going out alone either in the early morning or after evening.



Ezo brown frog



## Minami Shokan-so

You must need to check in at an administration building from 9:00am to 4:30pm while the facility manager staying. (No Reservation / No Accommodation fee)  
We can accommodate up to 70 people in 4 rooms. (15-20 people in each room.)  
Providing induction cooktops and shower rooms, but no beddings or foods which you need to bring them by yourself. Please clean up after using it.



## Campsite

You must need to check in at an administration building from 9:00am to 4:30pm while the facility manager staying. (No Reservation / No Accommodation fee)  
There are 60 sites for tent-only.  
No tents are available to rent.  
Wheelbarrows are available at the Administration Building if you needed.



## Administration Building

Facility manager is stationed during the season from 9:00am to 4:30pm.  
Registration is required to hike on the trail even though you only go up to the marsh.

Maintenance fee is required (500 yen per visitor from over 18 years old.)

The area of Uryunuma-shitsugen marsh is habitat of Brown bears.  
Please be care of yourself trekking in the early morning and walk downhill until 5p.m.



## Other facilities

Restrooms, 2 cooking areas, and First and Second Parking lots respectively capable of 73 cars and 76 cars respectively).  
\*300 meters away between two parking lots.



## Please note:

No pets, no fireworks, and no generator allowed.  
Please follow facility manager's instructions.  
Take the garbage away with you.  
Cell phones may have no service. The signals of your cell phone depends on the carrier or the device you use.



## Emergency contact information:

If you need emergency medical care, please call Takikawa Fire Department Koryu Fire Station at 0125-75-3119.  
(Calling 119 connects you to a fire department in Sapporo or Asahikawa.)  
There is no pay phone on-site.



## Places to buy souvenirs in Uryu

Roadside Station, "Den-en no sato Uryu."  
0125-79-2100  
with:  
Uryunuma Shizenkan Nature Museum  
Gallery BOKKYOU  
Fresh Market and Souvenir Shop  
Restaurant Ho



## Public bath in Uryu

Iki-iki kan  
0125-77-2241  
OPEN: 11:00am - 9:00pm  
Closed: 4th Monday of each month



### Publisher:

Agriculture, commerce and industry group, Industry and Construction Department of Uryu 0125-77-2248  
Uryu Tourist Association 0125-77-2673

※This guide was written based on the information as of June 2023.

## Shokanbetsu-Teuri-Yagishiri Quasi-National Park

# Uryunuma-shitsugen Marsh Trekking Guide



北海道遺産

Ramsar Site

Selected as Hokkaido Heritage in 2004.

Registered as a wetland under the Ramsar Convention in 2005.



For the information of Uryunuma-shitsugen Marsh and Mt. Minamishokan, please visit:

<https://uryunuma.info/>



## Flowers in the Marsh.



Skunk cabbage (early June to early July)



Bog-rosemary (mid-June to mid-July)



Aleutian violet (late June to early July)



Globe flower (early July to late July)



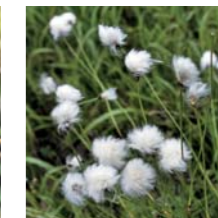
False hellebore (early July to late July)



Arctic iris (early July to late July)



Small cranberry (early July to late July)



Hare's-tail cottongrass (mid-July to mid-August)



Pygmy waterlily (mid-July to early August)



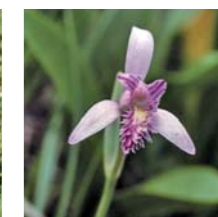
Daylily (early July to early August)



Spatterdock (mid-July to late August)



Round-leaved sundew (late July to mid-August)



Japanese pogonia (late July to early August)



Plantain lily (late July to late August)



Lobelia (early August to early September)



Thistle (early August to mid-September)



Gentian (mid-August to mid-September)



# Road to Uryunuma-shitsugen Marsh and Mt.Minamishokan

## From Central Uryu to the trailhead: 50 minutes by car

Drive 26 km on prefectural road 432 from Central Uryu takes you to the trailhead.

## From the trailhead to the terrace in the marsh: approx. 2 hours on foot

Walking approx. 1.5 km along Penkepetan River, you will find the 2nd suspension bridge.

Next 1.5 km walk takes you to the terrace at the marsh entrance, and walking 500m more takes you to the terrace in the marsh.

## From the terrace in the marsh to the observatory: approx. 1 hour on foot

There is a 4km-wooden-walkway where you can observe marsh plants and ponds. Climbing 500m from Mt.Minamishokan junction, a western edge of the marsh, you will find the observatory where you can take a rest viewing the marsh. 5-6 hours for a round-trip between the trailhead and the observatory, which allow you a one-day trip.

## From the observatory to Mt.Minamishokan: approx. 1.5 hours on foot

A ridgeline trail is gentle. Once you get to Creeping Pine Zone, peak of the Mt.Minamishokan is almost there. 7-8 hours for a round-trip between the trailhead and the peak.

## Traverse from Mt.Shokanbetsu Mashike Town

23 km traverse to Mashike Town through Mt.Minamishokan and Mt.Shokanbetsu, approx. 10 hours. Pay extra attention to weather conditions as well as to make all possible preparations. Set up a reasonable plan that you can fit into your schedule and your conditions.

\*Numbers in the brackets are altitudes and standard durations on foot. (Not including rest time.)



# Uryunuma-shitsugen Marsh

It is located in the south of Shokanbetsu-Teuri-Yagishiri Quasi-National Park. You can view the Mt.Minamishokan (1,296m) and the Mt.Shokanbetsu (1,492m). Also, you can see hundreds of small ponds and approximately 150 kinds of marsh plants such as Nuphar pumilum var. ozeense forma rubro-ovaria and Filipendula yezoensis. From mid-June to early October, many hikers from all over Japan visit here.

Scenery from Uryunuma-shitsugen observatory



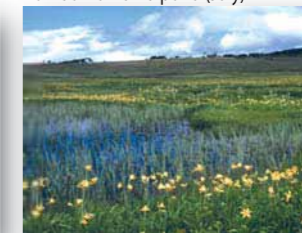
Kohone-numa pond (August)



A series of interconnected ponds (October)



Tombo-no-numa pond (July)



Scenery around Ukishima-bashi bridge (July)



Ukishima-bashi bridge (July)



Wash shoe sole here



Terrace at the marsh entrance



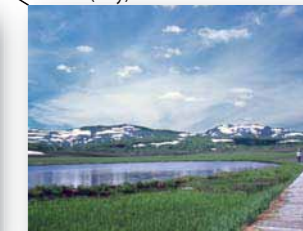
Hyotan-numa pond (Gourd-shaped)



Terrace in the marsh



Onuma (July)



Outline of Uryunuma-shitsugen



for English



한글



中文(简体字)



中文(繁體字)

# Trekking Safety and Etiquette

## Drinking Water

No drink in the mountains. Carry plenty of water on your own. \*You can buy drinks at the trailhead.

## Resting Area

No camping is allowed in quasi-Parks except the designated area. You can take a rest at the terraces at the marsh entrance and in the marsh, or the observatory. Take the all garbage away with you. Thank you for caring both Nature Conservations and other hikers.

## Please note:

- Mountain weather conditions can change dramatically, so pay extra attention to weather conditions and make all possible preparations. Poor planning can cause accidents. No staying in the mountains is allowed in the night.
- Uryunuma-shitsugen Marsh is designated as a quasi-national park and special protection area. DO NOT enter the protected area except the trails.
- From June to July, there are many mosquitoes, gadflies, and black flies. Please take measures to avoid bug bites.
- No toilet facilities along the trails and in the marsh. Please use the toilets at Gate Park, or carry portable toilets.
- From mid-October to mid-June, no hiking is allowed since the suspension bridges are removed. Snowmobiles are not allowed.